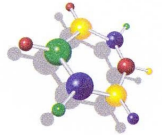




www.roadcoat.com



DEVELOPMENT

CENTRO Hi-MARK

PARKDECKS

TRAFFICED SAFETY & DIRECTIONAL

MARKING



PRODUCTION

PERFORMANCE TECHNICAL DATA

This tough, extremely wear resistant marking system was developed for the long term safety and aesthetic requirements at **CENTRO MSCP Oberhausen Germany**, where **62.4 miles were applied** onto 260,000 m² of ROADCOAT **CENTRO DRIVING SURFACES** in 1996.



SPECIFICATION

This marking is an architectural hi-light - It stands out !!

Recommended Colours:

Arrows	White or Signal Yellow RAL 1003
STOP	White
EXIT/ENTRANCE	White
GIVE WAY symbol	White
Pedestrian Crossing	White

and other floor signage subject to driving lane traffic.

Thickness: 3-4 mm

Surface: non slip SRT 45 wet tested.

Cleaning

See our **MAINTENANCE & CLEANING** information sheet.

Quality-Control

ROADCOAT materials are developed and manufactured to EN ISO 9001.



INSTALLATION

ROADCOAT GmbH
EN ISO 9001

ROADCOAT (UK) Limited

enquiries@roadcoat.com www.roadcoat.com

Perf. Tech Data RC **CENTRO Hi-MARK rev 2**