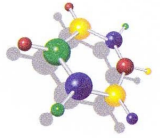




www.roadcoat.com



ROADCOAT CENTRO

PARKDECK PROTECTIVE DRIVING SURFACE

TECHNICAL DATA

Test results to the requirements of: BS EN 1504-2:2004

For the protection of concrete car park interior decks

Products and systems for the protection and repair of concrete structures - Part 2: Surface protection systems for concrete

Annex B EXAMPLE 2:

Coating system for interior surfaces, mechanically loaded

No. Table 1	Test methods	Characteristics	Requirement	Test Result	Fulfilled
1	EN 12617-1	Linear Shrinkage	< 0.3 %	0.1 %	Yes
2	EN 12190	Compressive Strength	> 35 N/mm ²	53.7 N/mm ²	Yes
4	EN ISO 5470-1	Abrasion Resistance	< 3000 mg	1380 mg	Yes
6	EN 1062-6	Permeability to CO ₂	> 50 m	1200 m	Yes
7	EN ISO 7783-2	Perm. to water vapour	> 50 m(class III)	> 200 m	Yes
8	EN 1062-3	Capillary absorption and Permeability to water	< 0.1 kg/m2xh0.5	< 0.01	Yes
9	EN 1062-11	Adhesive tensile strength - after 7 days at 70° C - after 7 days at 23° C	> 2.0 N/mm ² > 2.0 N/mm ²	4.5 N/mm ² 5.6 N/mm ²	Yes Yes
12	EN 13529	Resistance to deicing salts Petrol, diesel, break fluid, detergents	< 50% loss of strength	no loss	Yes
14	EN ISO 6272-1	Impact Resistance	> 4 Nm(class I)	> 4 Nm	Yes
15	EN 1542	Adhesion by pull-off test	> 2.0 N/mm ²	5.6 N/mm ²	Yes
18	EN 13036-4	Slip/Skid resistance	> 40 units (wet)	62 unit wet	Yes

Extra test EN 1062-7 Method A **crack bridging ability** none crack at 0.165 mm

In-Situ Wear Resistance Test :

At 1.5mm thickness still fulfilling the required functions as a non-slip, corrosion protective driving surface on amphibious bridges after **9600 passes of a 50t Leopard II TANK** during 17 months of NATO field tests.

Used at **0.8 mm thickness for NATO light weight** aluminium and reinforced polyester amphibious **bridges** after further field testing.

Surface evenness:

The levels of the finished coating are determined by the substrata, which will be followed by the **CENTRO**. Water run-off or ponding is neither reduced nor increased by the **CENTRO**.



DEVELOPMENT



PRODUCTION



SPECIFICATION



INSTALLATION

ROADCOAT GmbH
EN ISO 9001